

## PPH Print Competition File Specs

### 1. File Specification

- **File Dimension:** 8"x10" is preferred. If your image dimensions are something other than 8"x10", the **LONGEST** side **MUST** be 10 inches. Not 9.5" or 10.5, but 10! See Paragraph 4 for how to set longest side to 10".
- **Color Space:** sRGB or Adobe 98 profile
- **Resolution:** 300 PPI
- **File Format:** jpg

### 2. Categories

- **Portrait (P)**
- **Wedding (W)**
- **Electronic Imaging (EI)**
- **Illustrative (I)**

### 3. File Labelling:

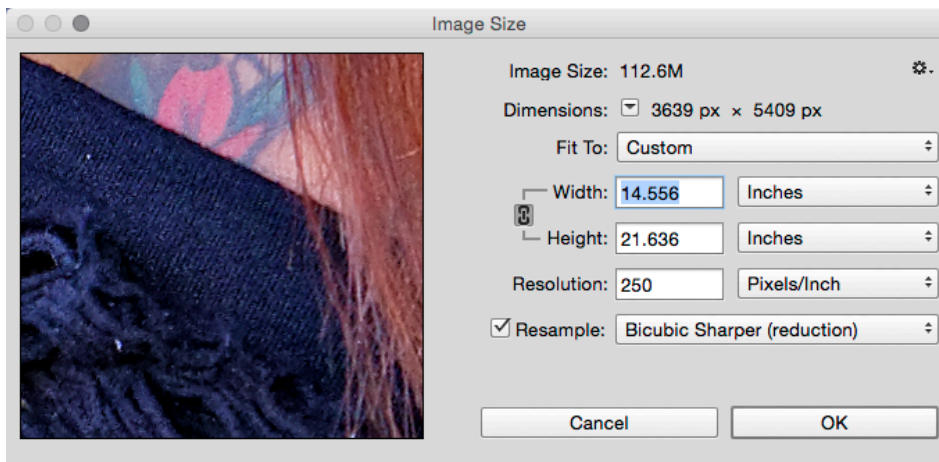
**Format:** [Your ID] Title-Category.jpg

Your ID can be your initials or two to three letters to identify yourself.

Ex: WIL Girly Pic-P.jpg      JC Flower 124-I.jpg      DW Really Cool Shot-EI.jpg

**NOTE: DO NOT** add unnecessary spaces or use underscore within your label. Improper labeled images will be posted without title.

### 4. Check size of image (In Photoshop): Image→Image Size



If you're using CS6 or CS5 your dialog box may look different. Be sure the measurements are in **inches**. If it's the first time you're bringing up this dialog box it may be in pixels.

The key, make sure the largest number is set to **10**. The smaller number will be automatically adjusted to fit the dimensions of your image. In the example above, you would change 21.636 (Height) to 10.

Contact me at [Willard@poindexter-photography.com](mailto:Willard@poindexter-photography.com) if you have any questions.